

BURTON PARK ADDITION (AMENDED PLAT)

TAXING UNIT: 25

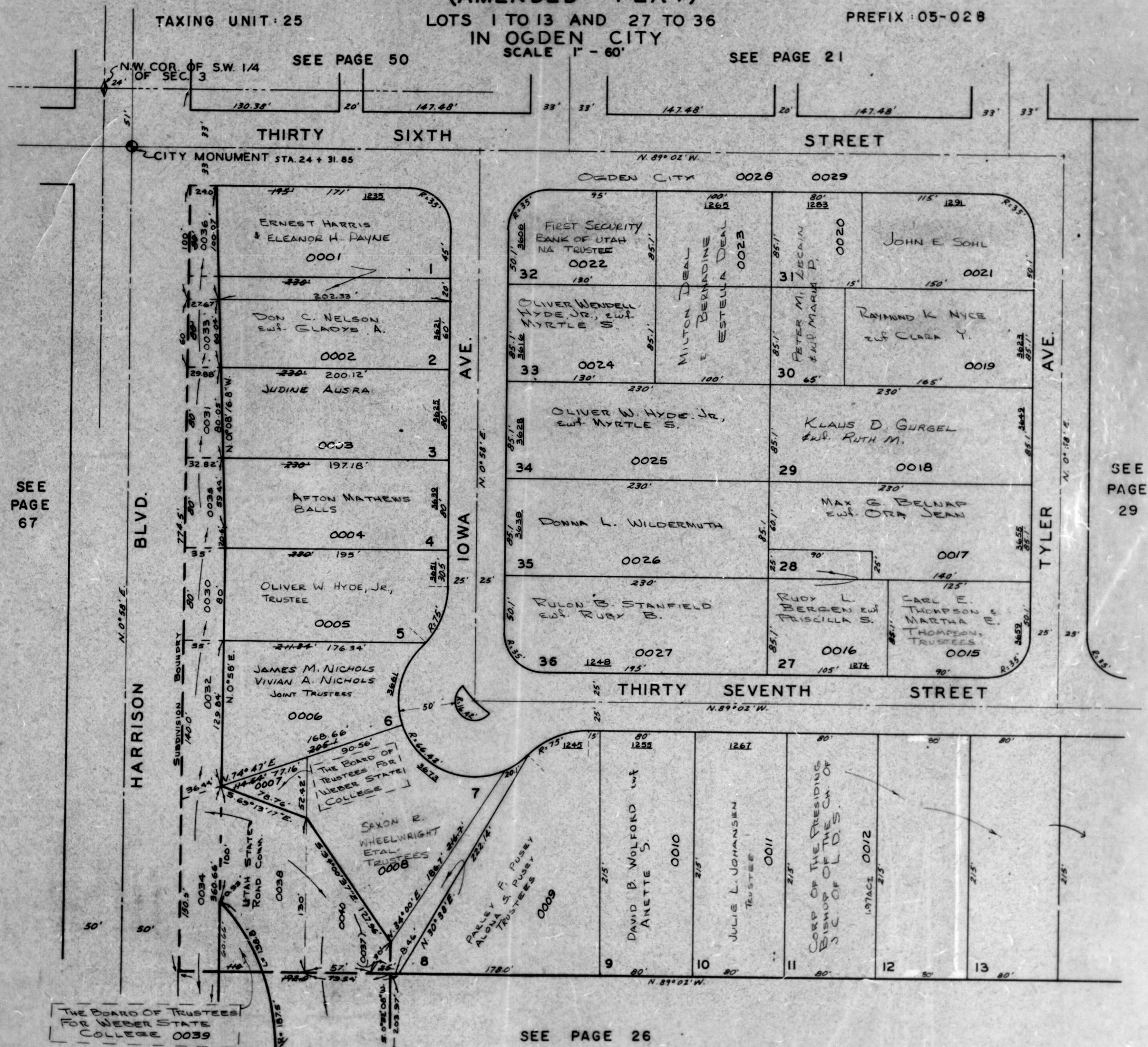
LOTS 1 TO 13 AND 27 TO 36
IN OGDEN CITY

PREFIX: 05-028

SEE PAGE 50

SEE PAGE 21

SCALE 1" = 60'



SEE PAGE 67

SEE PAGE 29

SEE PAGE 26